



# THE JOURNEY

A Publication of Friendship Home | Spring 2020

## Stuff the Bus!

Friendship Home is excited to be partnering with StarTran, Alpha Media, Walmart, and Sam's Club for the 21<sup>st</sup> annual "Stuff the Bus" event. Together with the Lincoln community, this event fills our shelves at Friendship Home with everyday items our residents and their children need to rebuild their lives and empower freedom from domestic violence.

Please join us on Saturday, April 4<sup>th</sup> and/or Sunday, April 5<sup>th</sup> by volunteering just a short time to help us "stuff the bus." There are volunteer opportunities for families, individuals, and organizations, and we cannot do it without your support.

*For more information on volunteering, check out our "Give Help" tab at [friendshiphome.org](http://friendshiphome.org), or visit us that same weekend by shopping at a local Lincoln Walmart or Sam's Club. By adding an extra few items to your cart you will help the nearly 1,500 women and children we serve each year. Thank you!*

## *Empowering freedom from domestic violence*

Friendship Home partners with an array of community agencies, but none more important than the Lincoln Police Department (LPD). An example of that invaluable partnership was their attention and support of Allie, a 23-year-old victim of considerable abuse from her husband, Logan.

Allie, a grade school teacher with two young children, feared for her life when Logan hit her and pushed her down a flight of stairs. The children were terrified and screaming as Allie was finally able to get to the phone and call the police. Logan fled before the police arrived. Concerned that Logan might return, LPD called Friendship Home. The following day, Officer Steve Wherry, LPD's Domestic Violence (DV) Coordinator contacted the Friendship Home, aware that we could not confirm Allie was in shelter, he simply wanted Friendship Home to know that Logan had not been located and the police remained concerned for her safety. Then he suggested that she might consider getting an order of protection.

Allie's Case Manager visited with her about how a protective order works, allowing Allie to decide if it was an option she wanted to consider. Beth McQueen, Manager of LPD's Victim Assistance Unit, met with Allie to complete the documentation needed to request the order. Eventually, Logan was arrested and charged. The protection order requested was granted and after only a few weeks in shelter Allie was able to return to her home, collect her belongings, and move in with a friend.

Both Wherry and McQueen agree on the importance of this mutually vital relationship. Beth said, "**Friendship Home's willingness to collaborate has enabled us to increase our capacity to serve victims and their children, particularly those in immigrant communities, through Friendship Home staff who assisted us with interpretation, culturally relevant services, and support.**" Wherry agreed, "As the DV Coordinator for the past four years, I can tell you that as far as partnering with the Friendship Home and its wonderful staff, it has been an essential partnership. I am always amazed at the staff's empathy and passion towards helping victims of domestic violence."

# From the Executive Director

*We can't do it alone.*

Friendship Home helps victims of domestic violence find physical and emotional safety. We offer possibilities to help change victims' lives ... we are hope they can feel!


Our emergency shelter, transitional housing and crisis services are vital to victims. But domestic violence is complex and helping victims be safer requires the commitment and skills of many valued community partners. It requires the proverbial village.

We often feature the work of those treasured partners in our newsletter. In this issue, we focus on the work of the Lincoln Police Department, specifically their Domestic Violence Coordinator and Victim Witness Unit.

Here in Lincoln, we are fortunate to have a police force that is truly committed to best practices for improving the safety of victims.

Our thanks to the many fine men and women of the Lincoln Police Department and all of our collaborative partners, donors, and friends.  
**You make the difference! With your support, Friendship Home empowered more than 1,500 victims in 2019 to rebuild their lives.**

Thank you!

  
Amy Evans  
Executive Director

## Save the Date!

**Stuff the Bus** | April 4-5

**Give to Lincoln Day** | May 28

**Safe Quarters** | October TBA 2020

Follow us for updates on upcoming events and volunteer opportunities!

[f /friendshiphome](https://www.facebook.com/friendshiphome)

[ig /friendshiphomeoflincoln](https://www.instagram.com/friendshiphomeoflincoln)

[globe /friendshiphome.org](http://www.friendshiphome.org)

SPRING 2020



[www.friendshiphome.org](http://www.friendshiphome.org)



## Capital One "Employee Giving Tree" supporting Friendship Home

Thank you to all of our donors that made the holidays a special time for the families that are rebuilding their lives from domestic violence with Friendship Home.

With the support of these very special donors, 35 families including 76 children received gifts and holiday meals that brightened their season. From dolls and trucks to vacuums and gas cards, Friendship Home families were able to continue on their journey of freedom from domestic violence while receiving simple items to help make the holidays a bit better.

We are truly grateful for the outpouring of support from individuals, families, and organizations in Lancaster County. The generosity that we see during the holidays is a reminder that our community is committed to caring for others and supporting Friendship Home to be a hand to hold for those individuals fleeing domestic violence.



# Friends of Friendship Home

*We are so grateful to you for giving your time, energy, and resources ... and, above all, your compassion to support those who we are serving.*

**1 ABATE (American Bikers Aiming Towards Education)** once again made the holidays special for those in shelter with two full truckloads of gifts. To see the wide eyes of a little girl who spotted an “Our Generation” doll from across the room was priceless. Thank you ABATE for your support not only over the holidays but, all year long.

**2** Friendship Home would like to recognize the **Sutton Dermatology & Aesthetic Center, and Eye Surgical Associates** staff for organizing and purchasing gifts for the families that were being served by Friendship Home this holiday season. From dishes to bedding, vacuums, and more, you all know how to make a house feel like home. Thank you for your kindness and generosity!

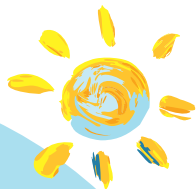
**3** It was the ultimate battle of teams, “Sales & Compliance” vs. “Operations & Compensation” at **Allstate Financial** raising a total of \$2,066 in 2019 for Friendship Home. Thank you Friendship Home Board Member, Mary Nelson, and the Allstate teams for your support in helping empower freedom from domestic violence.

**4** Thank you **Scheels of Lincoln** for hosting an exclusive after hours VIP experience and a fun night of friendship. The Scheels Fashion for Friendship event benefiting Friendship Home raised over \$2,000 through a special evening of live models, local vendors, Hors d'oeuvres, special offers to the evenings guests, as well as exciting raffle items.

**5** Thank you to Friendship Home volunteers Debby Portnoy and Emily Weeks for their beautiful holiday tree decorating at **Heritage League's 48<sup>th</sup> Annual Holiday of Trees** display located at Westminster Presbyterian Church. The display not only brings awareness to the services provided by Friendship Home but the proceeds from the event also support the Lincoln Music Teacher's Association's Music Outreach Program.

*We are truly grateful for all of our friends!  
To see a full list of donors please visit [friendshiphome.org](http://friendshiphome.org).*

## Are you an online donor?



If yes, we encourage you to use Friendship Home's secure website, [www.friendshiphome.org](http://www.friendshiphome.org). Donations come directly to Friendship Home and we all benefit from lower processing fees. **Thank You!**



# Lives You Have Touched

January – December 2019



**43,267**

Bed nights



**67,077**

Meals were provided



**1,182**

Victims and their  
children requested  
safe shelter



**1,525**

Victims received shelter  
and/or crisis services,  
665 were children



**695**

Victims of domestic  
violence were sheltered,  
454 were children

*A sincere thank you to our recent contributors for your generosity.*

*To maintain a level of commitment to being cost-effective, the donor lists are now published online at [www.friendshiphome.org](http://www.friendshiphome.org).*

## WE NEED YOU!

### Long-Term Health Benefits of Volunteering

Friendship Home has many opportunities for volunteer support through our annual events and year-round activities. We want to help our volunteers find a project that fits their strengths and interests. **Contact our Volunteer Coordinator, Rainey at [raineyk@friendshiphome.org](mailto:raineyk@friendshiphome.org)** for more information and help us continue to empower freedom from domestic violence.

A recent post, "Volunteer Recruiting" by Clair Shinn was shared by [nonprophub.org](http://nonprophub.org) regarding the long-term benefits of volunteering. If you have not started your volunteerism, Friendship Home is happy to help you determine what fits you best. Please see some of the benefits of volunteering as outlined by Clair Shinn:

- 1 By helping others, you'll build a greater sense of trust and self-esteem.
- 2 You connect to others through volunteering, and you can maintain those relationships into the future.
- 3 When you give your time to others, you attain a personal sense of accomplishment.
- 4 Volunteering does more than boost your mood, it also has effects on your physical well-being.



## Friendship Home

### Our Mission

Friendship Home exists to support, shelter and advocate for victims of domestic violence and their children.

### Board of Directors

Kirk "Joe" Adams	Mary Jo Gillespie	Marcella Sanchez-Nelsen
Kris Baack	Kathy Griesel	Brock Shelton
Brady Bauer	Susan Martin	Krystal Siebrandt
Tera Beermann	Jill Miller	Erin Soper
Sharon Cirone	Michon Morrow	Wade Walkenhorst
Brad Ewerth	Lindy Mullin	Crystal Wichita
Becky Ferguson	Mary Nelson	Lincoln Zehr
Matt Ferris	Darcie Ross	
Debbie Gaspard	Cecilia "Sissy" Ruley	

### Remember Friendship Home

Please let us know if you've included Friendship Home in your will and estate plans. We would like to add you to our Legacy Society. **To learn more, contact Sande Dirks, Donor Relations, at 402.434.0160.**

This newsletter is published three times annually by

### Friendship Home

P.O. Box 85358, Lincoln, NE 68501-5358

**402.434.0168**

24-Hour Crisis Line: **402.437.9302** • Donation Line: **402.437.9301**

